



PO BOX 54 HAMILTON NSW 2303
140 DENISON STREET CARRINGTON NSW 2294
PH: 02 49615 777 FAX: 02 49696 246
EMAIL: newcastleminicranes@bigpond.com
ABN: 23 466 091 441

TOA TC-304



Specifications

Length: 4200mm
Width: 1340mm
Height: 1550mm
Weight: 3250kg

4) Working Area Chart and Rated Load Chart

Working Area Chart

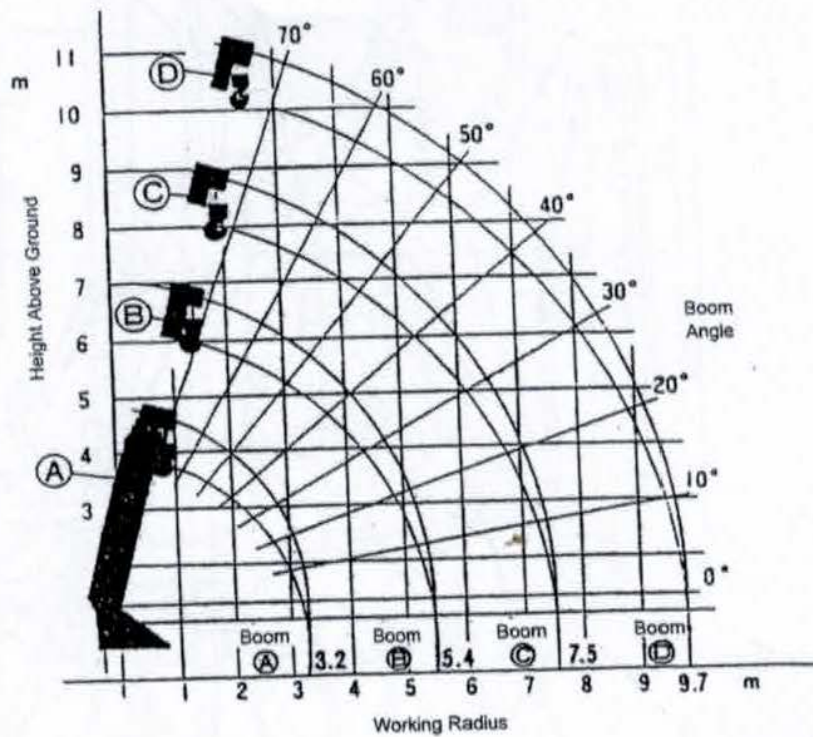


Diagram 1

Rated Load Chart (Loads include the weight of the hook)

When using boom sections A and B:

Working Radius (m)	2.0	2.5	3.0	3.5	4.0	4.5	5.0	5.4
Rated Load (t)	2.9	2.5	2.0	1.6	1.3	1.1	0.93	0.8

When using boom sections A, B and C: (This chart should be used even if boom section C is only slightly extended)

Working Radius (m)	3.0	3.5	4.0	4.5	5.0	5.5	6.0	6.5	7.0	7.5
Rated Load (t)	2.0	1.6	1.3	1.1	0.92	0.77	0.67	0.57	0.52	0.45

When using boom section A, B, C and D: (This chart should be used even if boom section D is only slightly extended)

Working Radius (m)	3.0	4.0	5.0	6.0	7.0	8.0	9.0	9.7
Rated Load (t)	1.0	0.9	0.77	0.67	0.52	0.41	0.34	0.31

The rated loads are applicable when the outriggers are extended to their standard position (p18). These loads must be reduced to 70% when operating the crane with the boom facing the driver's side.

External Dimensions

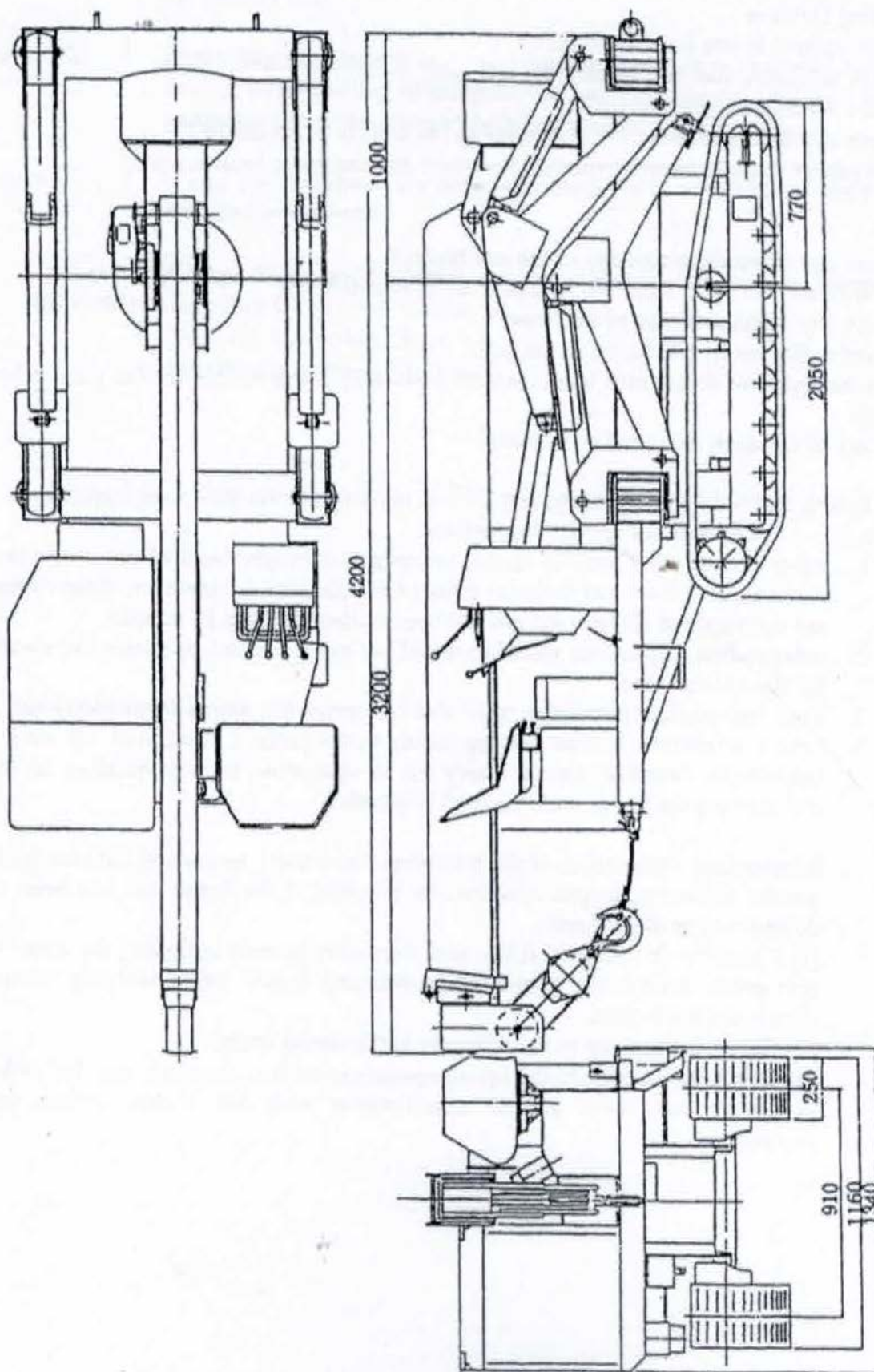


Diagram 3