



PO BOX 54 HAMILTON NSW 2303  
140 DENISON STREET CARRINGTON NSW 2294  
PH: 02 49615 777 FAX: 02 49696 246  
EMAIL: newcastleminicranes@bigpond.com  
ABN: 23 466 091 441

## MAEDA MC274C

<u>MAKE</u>	<u>MODEL</u>	<u>SERIAL NO</u>	<u>REGISTRATION</u>	<u>UNIT NO</u>
MAEDA	MC274C	273017	N/A	3



### Specifications

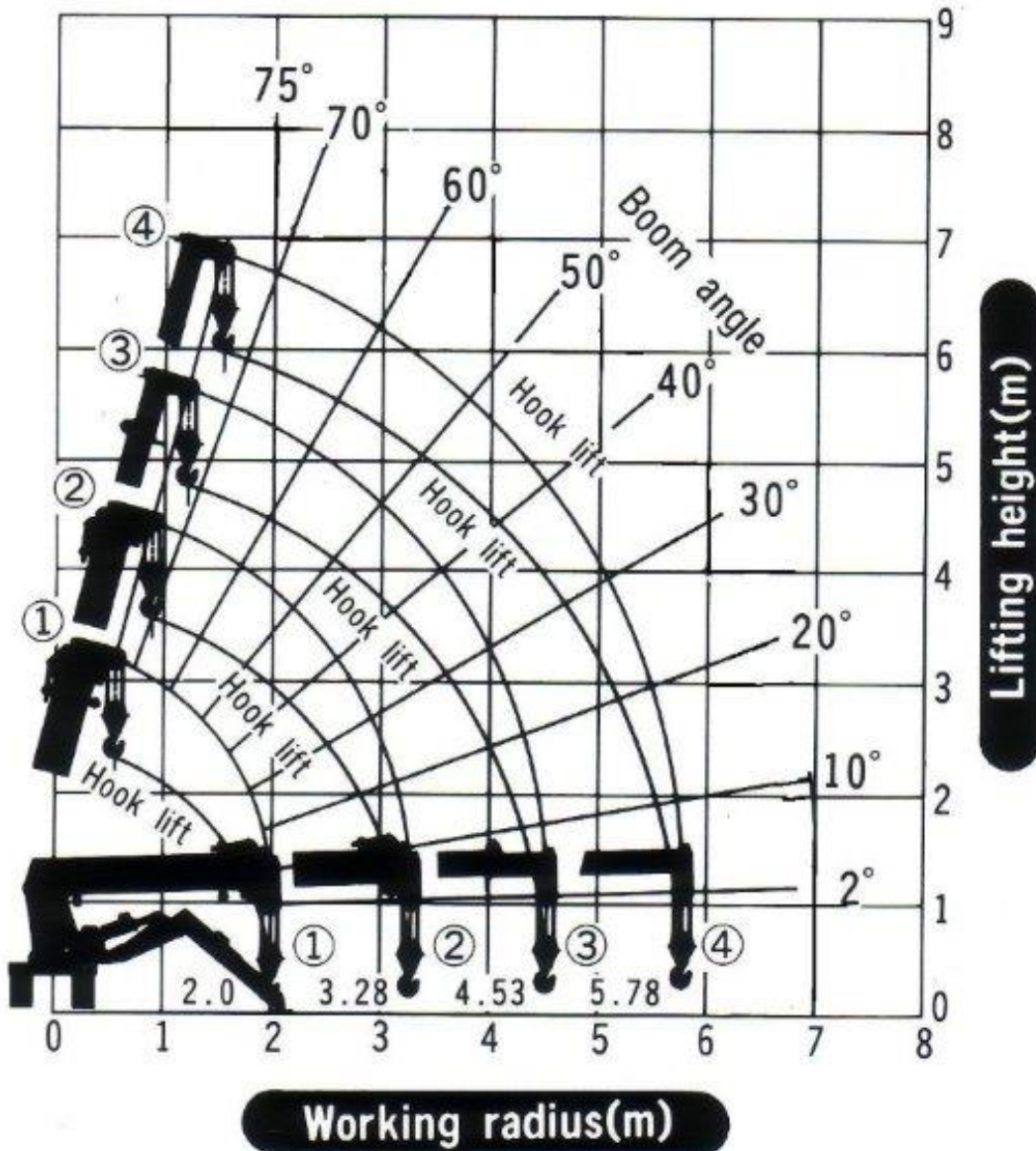
Length: 2536mm  
Width: 760mm  
Height: 1480mm  
Weight: 1535kg

# Rated Load Chart

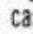
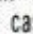
Load table with the outriggers stretched to their outermost position

Boom 1, 1+2		Boom 1+2+3		Boom 1+2+3+4	
Working Radius (m)	Overall load rating (kg)	Working Radius (m)	Overall load rating (kg)	Working Radius (m)	Overall load rating (kg)
1.5 or less	2520	2.5 or less	1570	3.5 or less	700
1.8	2080	3.0	1020	4.0	550
2.0	1920	3.5	760	4.5	400
2.5	1570	4.0	550	5.0	330
2.7	1270	4.45	400	5.5	290
3.0	1020			5.7	270
3.2	880				

## MC-27 4C Working range chart



**CAUTION**

1. Working range chart does not include boom deflections.
2. The case that more than a half of the first mark  comes out from boom 2 is applicable to boom 1+2+3+4.
3. The case that more than a half of the second mark  comes out from boom 2 is applicable to boom 1+2+3+4+5.